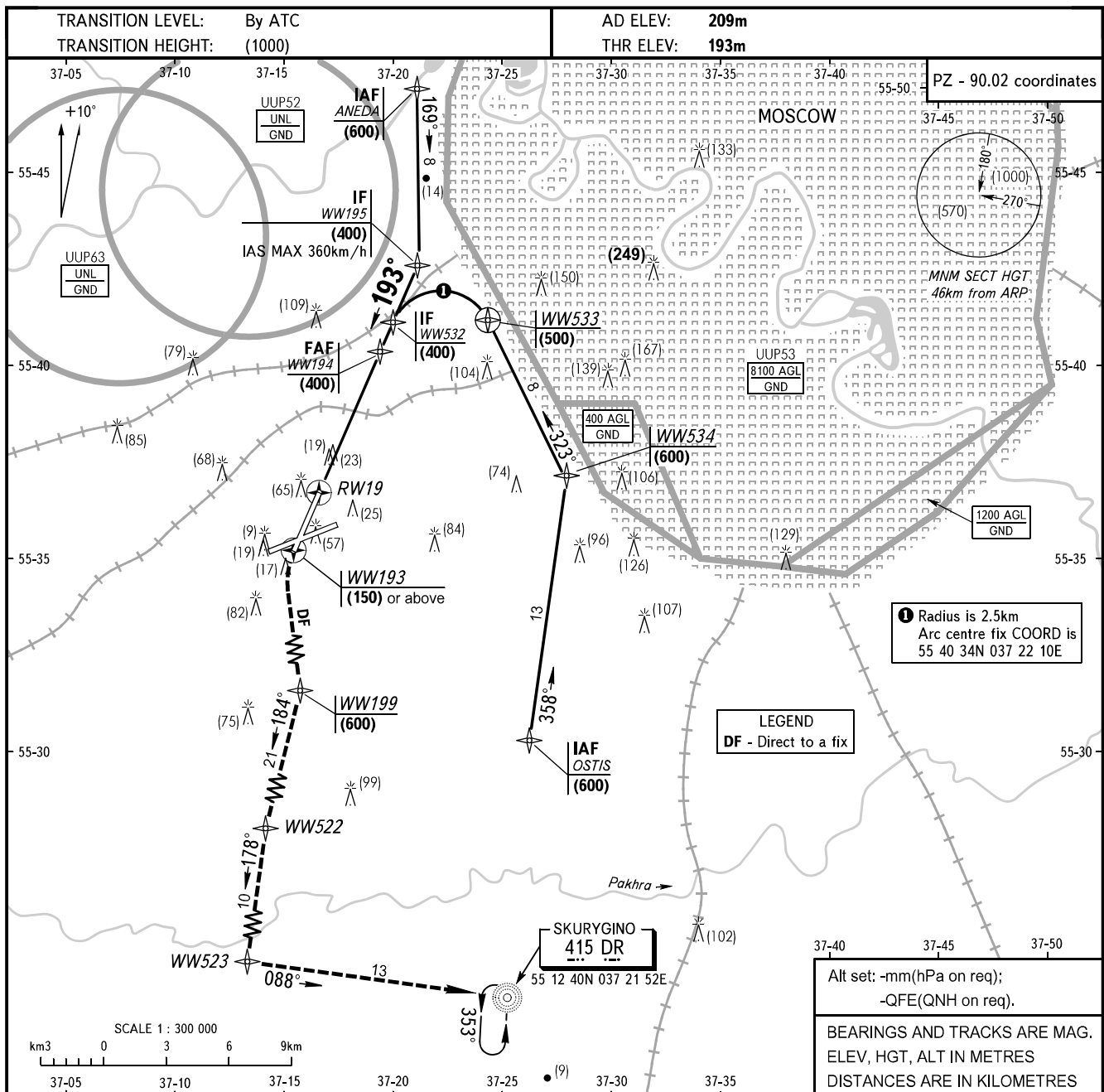


**INSTRUMENT
APPROACH
CHART - ICAO**

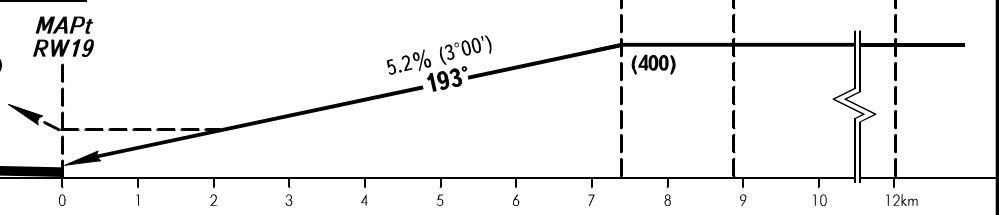
MOSCOW APPROACH See AD 2.1 UUWW-56
VNUKOVO RADAR 126.000
PRECISION 118.300

**MOSCOW, RUSSIA
VNUKOVO
RNAV (GNSS) RWY 19**



| | | | |
|------------------|-------|-------|-------|
| DISTANCE to MAPt | 3.0 | 5.0 | 7.0 |
| HGT | (175) | (275) | (380) |

MISSED APPROACH
Climb straight ahead to (150) or above to WW193, turn LEFT direct to WW199 climbing to (600), then on track 184° to WW522, then on track 178° to WW523, then on track 088° to NDB DR or by ATC instruction.



| | | | | | |
|----------------------|-------------|----------|----------|----------|----------|
| OCA/H | | A | B | C | D |
| Straight-in Approach | RNAV (GNSS) | 337(143) | 337(143) | 337(143) | 337(143) |

WARNING
After climbing to (200) immediately contact VnuKovo-Radar on frequency 126.000 MHz.

| | | | | | | | | | | | | |
|-----------------|------|-----|-----|-----|-----|-----|-----|-----|-----|-----|-----|-----|
| GROUND SPEED | km/h | 150 | 180 | 210 | 240 | 270 | 300 | 330 | 360 | 390 | 420 | 450 |
| RATE OF DESCENT | m/s | 2.2 | 2.6 | 3.0 | 3.5 | 3.9 | 4.3 | 4.8 | 5.2 | 5.6 | 6.1 | 6.5 |

CHANGE: Arc centre fix COORD, ELEV