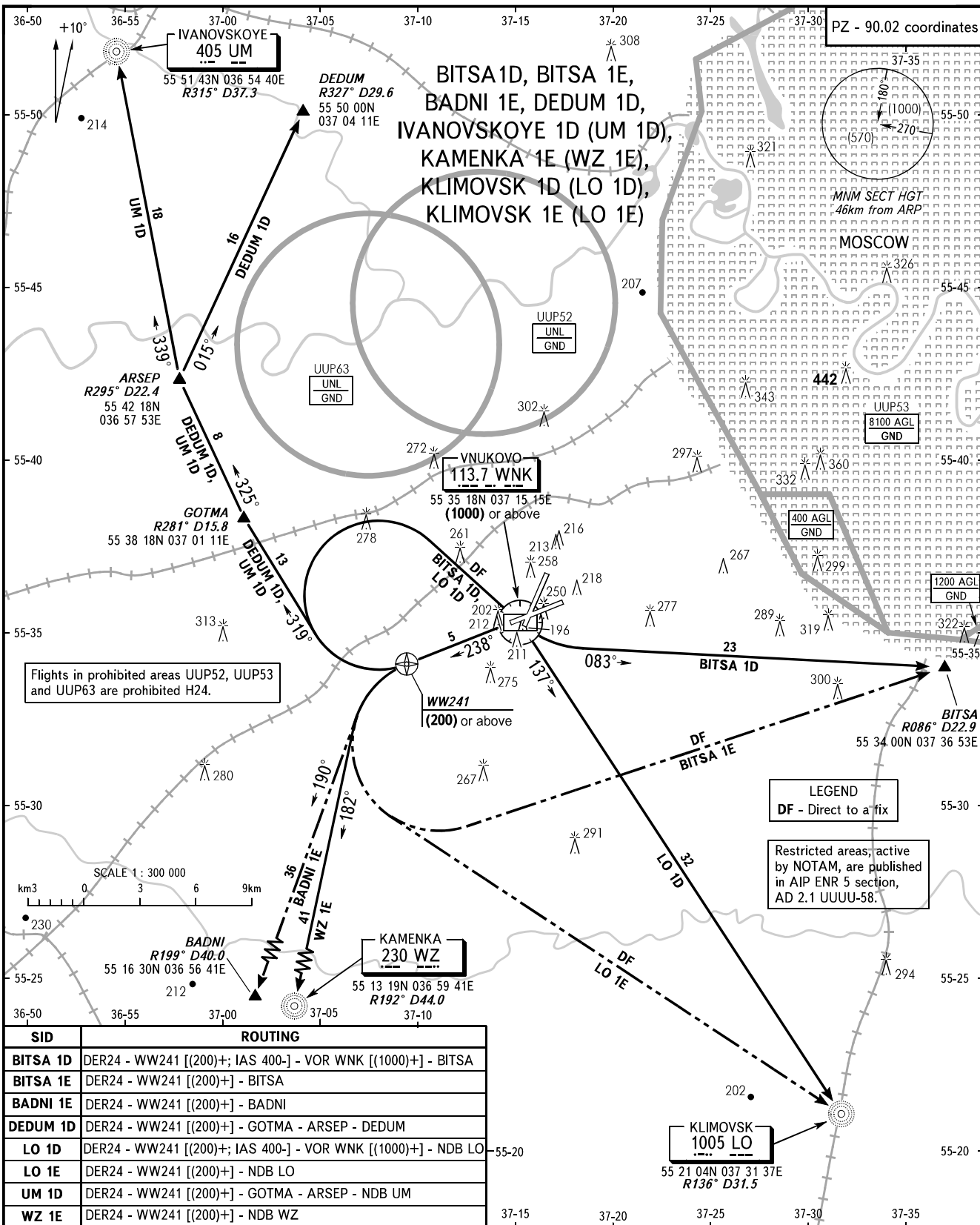


STANDARD DEPARTURE CHART
INSTRUMENT (SID) - ICAO

TRANSITION
HEIGHT : (1000)

MOSCOW, RUSSIA
VNUKOVO
RNAV RWY 24



Flights in prohibited areas UUP52, UUP53 and UUP63 are prohibited H24.

LEGEND
DF - Direct to a fix

Restricted areas, active by NOTAM, are published in AIP ENR 5 section, AD 2.1 UUUU-58.

SID	ROUTING
BITSA 1D	DER24 - WW241 [(200)+; IAS 400-] - VOR WNK [(1000)+] - BITSA
BITSA 1E	DER24 - WW241 [(200)+] - BITSA
BADNI 1E	DER24 - WW241 [(200)+] - BADNI
DEDUM 1D	DER24 - WW241 [(200)+] - GOTMA - ARSEP - DEDUM
LO 1D	DER24 - WW241 [(200)+; IAS 400-] - VOR WNK [(1000)+] - NDB LO
LO 1E	DER24 - WW241 [(200)+] - NDB LO
UM 1D	DER24 - WW241 [(200)+] - GOTMA - ARSEP - NDB UM
WZ 1E	DER24 - WW241 [(200)+] - NDB WZ

VNUKOVO TOWER **118.300**
RADAR **126.000**
MOSCOW APPROACH **See AD 2.1 UUUW-55**

- WARNING:**
- All ACFT shall follow the noise abatement procedures at all times as in accordance with ICAO DOC 8168.
 - After climbing to (200) immediately contact Vnukovo-Radar on 126.000.
 - Initially cleared height of climb after take-off for all SID routes is (600)m.
 - IAS MAX 460km/h up to FL100.

BEARINGS AND TRACKS ARE MAGNETIC
ALTITUDES, HEIGHTS AND ELEVATIONS ARE IN METRES
DISTANCES ARE IN KILOMETRES

CHANGE: LO 1D, VORDME IDENT