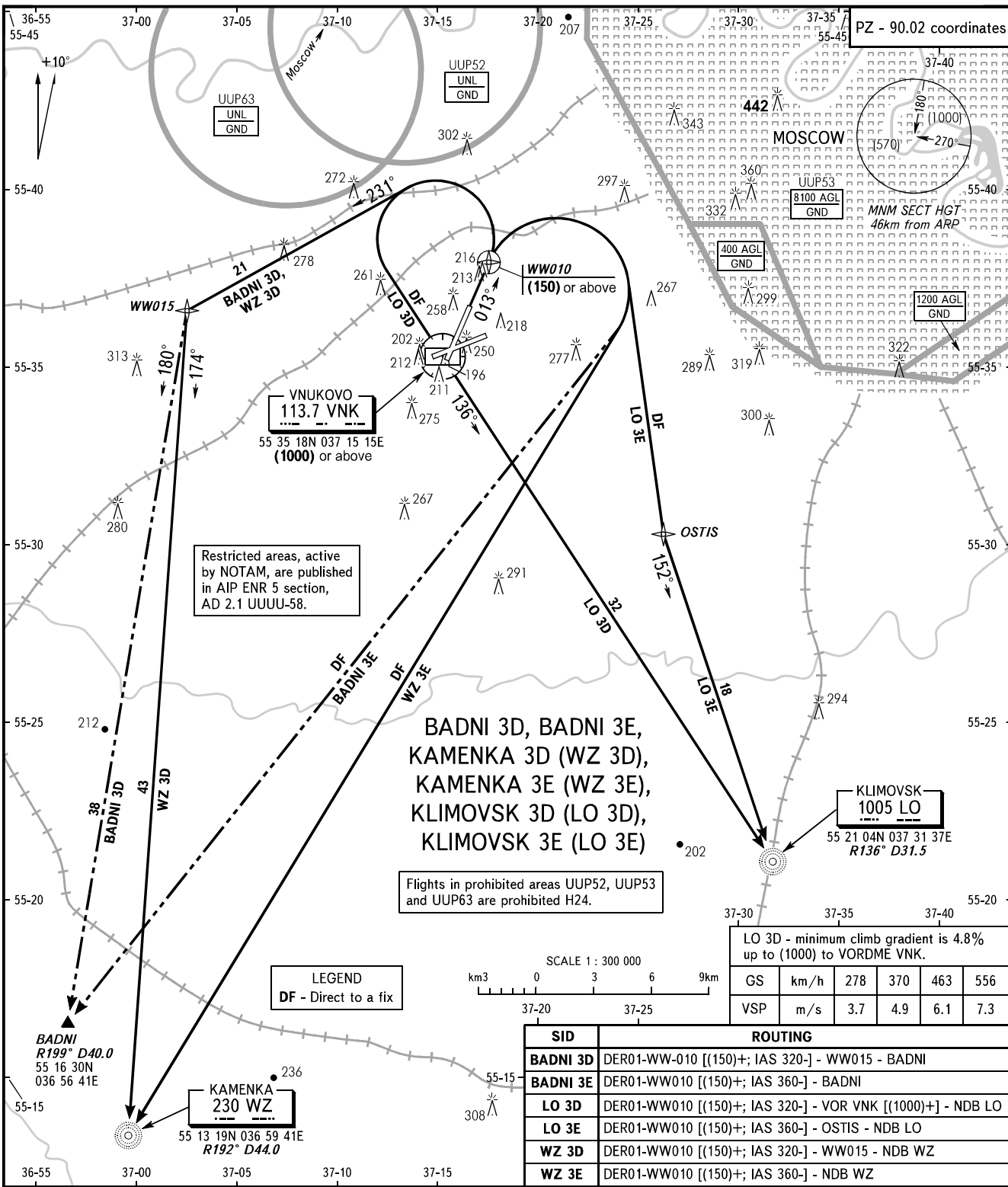


STANDARD DEPARTURE CHART
INSTRUMENT (SID) - ICAO

TRANSITION
HEIGHT : (1000)

MOSCOW, RUSSIA
VNUKOVO
RNAV RWY 01



VNUKOVO TOWER **118.300**
RADAR **126.000**
MOSCOW APPROACH **See AD 2.1 UUWW-55**

- WARNING:**
- All ACFT shall follow the noise abatement procedures at all times as in accordance with ICAO DOC 8168.
 - After climbing to (200) immediately contact VnuKovo-Radar on 126.000.
 - Initially cleared height of climb after take-off for all SID routes is (600).
 - Minimum climb gradient is 5.8% up to (150).
 - IAS MAX 460km/h up to FL100.

BEARINGS AND TRACKS ARE MAGNETIC
ALTITUDES, HEIGHTS AND ELEVATIONS ARE IN METRES
DISTANCES ARE IN KILOMETRES

| SID | ROUTING |
|----------|---|
| BADNI 3D | DER01-WW010 [(150)+; IAS 320-] - WW015 - BADNI |
| BADNI 3E | DER01-WW010 [(150)+; IAS 360-] - BADNI |
| LO 3D | DER01-WW010 [(150)+; IAS 320-] - VOR VNK [(1000)+] - NDB LO |
| LO 3E | DER01-WW010 [(150)+; IAS 360-] - OSTIS - NDB LO |
| WZ 3D | DER01-WW010 [(150)+; IAS 320-] - WW015 - NDB WZ |
| WZ 3E | DER01-WW010 [(150)+; IAS 360-] - NDB WZ |

| GS | km/h | 278 | 370 | 463 | 556 |
|-----|------|-----|-----|-----|-----|
| VSP | m/s | 3.7 | 4.9 | 6.1 | 7.3 |

CHANGE: New chart