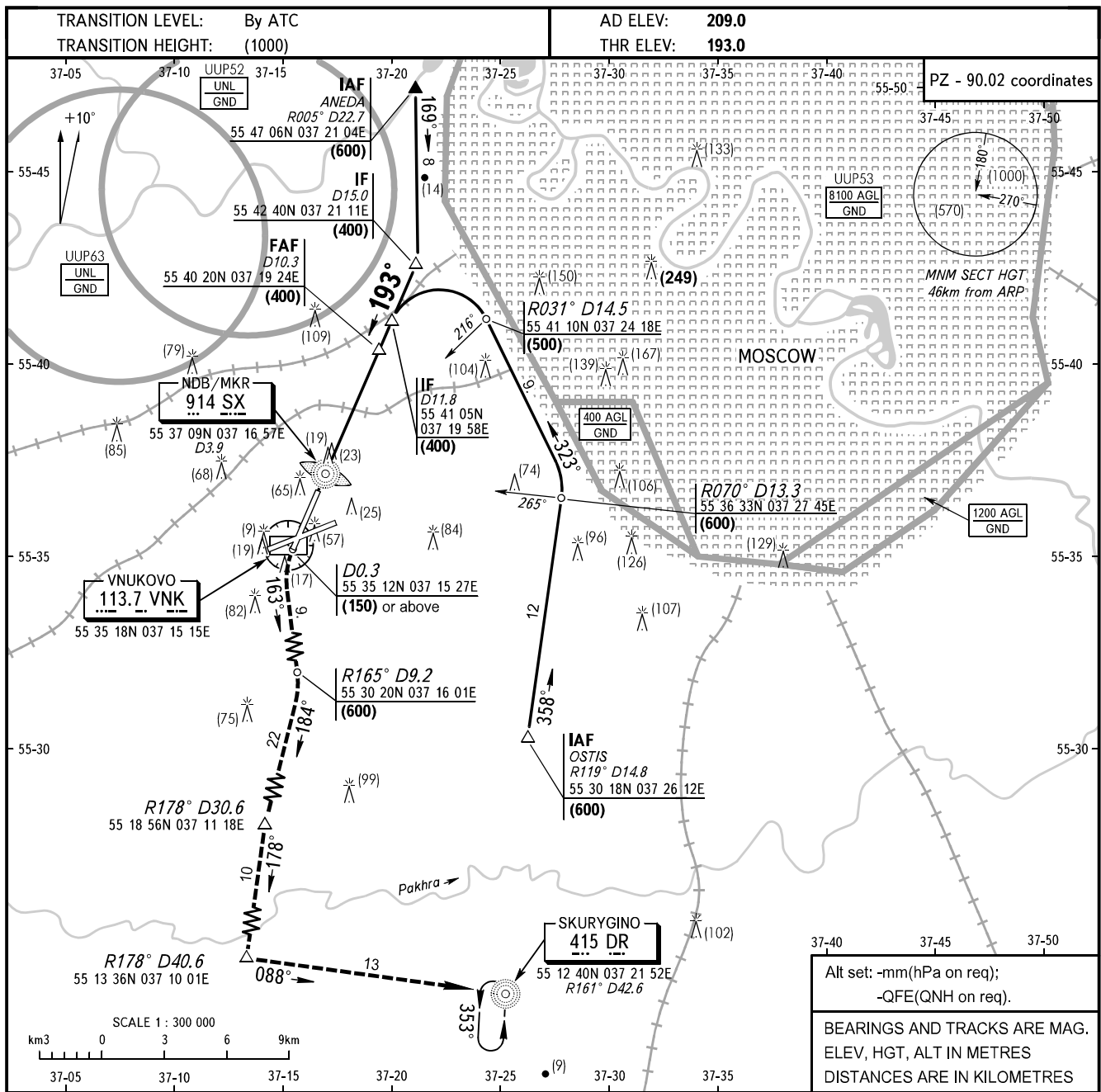


**INSTRUMENT
APPROACH
CHART - ICAO**

MOSCOW APPROACH See AD 2.1 UUWW-56
VNUKOVO RADAR 126.000
PRECISION 118.300

**MOSCOW, RUSSIA
VNUKOVO
NDB/MKR RWY 19**



MISSED APPROACH
Climb straight ahead to (150) or above to GEO point 55 35 12N 037 15 27E (D0.3), turn LEFT onto track 163° to GEO point 55 30 20N 037 16 01E climbing to (600), turn RIGHT onto track 184° to GEO point 55 18 56N 037 11 18E, then on track 178° to GEO point 55 13 36N 037 10 01E, then on track 088° to NDB DR or by ATC instruction.

MAPt SX D3.9

FAF D10.3 (400)

HGT at NDB/MKR (65)

SCALE 1 : 300 000

		OCA/H	A	B	C	D							
Straight-in	NDB/MKR	With FAF	428(235)	428(235)	428(235)	428(235)							
		WO FAF	428(235)	428(235)	428(235)	428(235)							
Approach													
GROUND SPEED		km/h	150	180	210	240	270	300	330	360	390	420	450
RATE OF DESCENT		m/s	2.2	2.6	3.0	3.5	3.9	4.3	4.8	5.2	5.6	6.1	6.5

WARNING:

- During approach via IAF OSTIS the length of intermediate approach is 1.5 km.
- After climbing to (200) immediately contact Vnuukovo-Radar on frequency 126.000 MHz.