

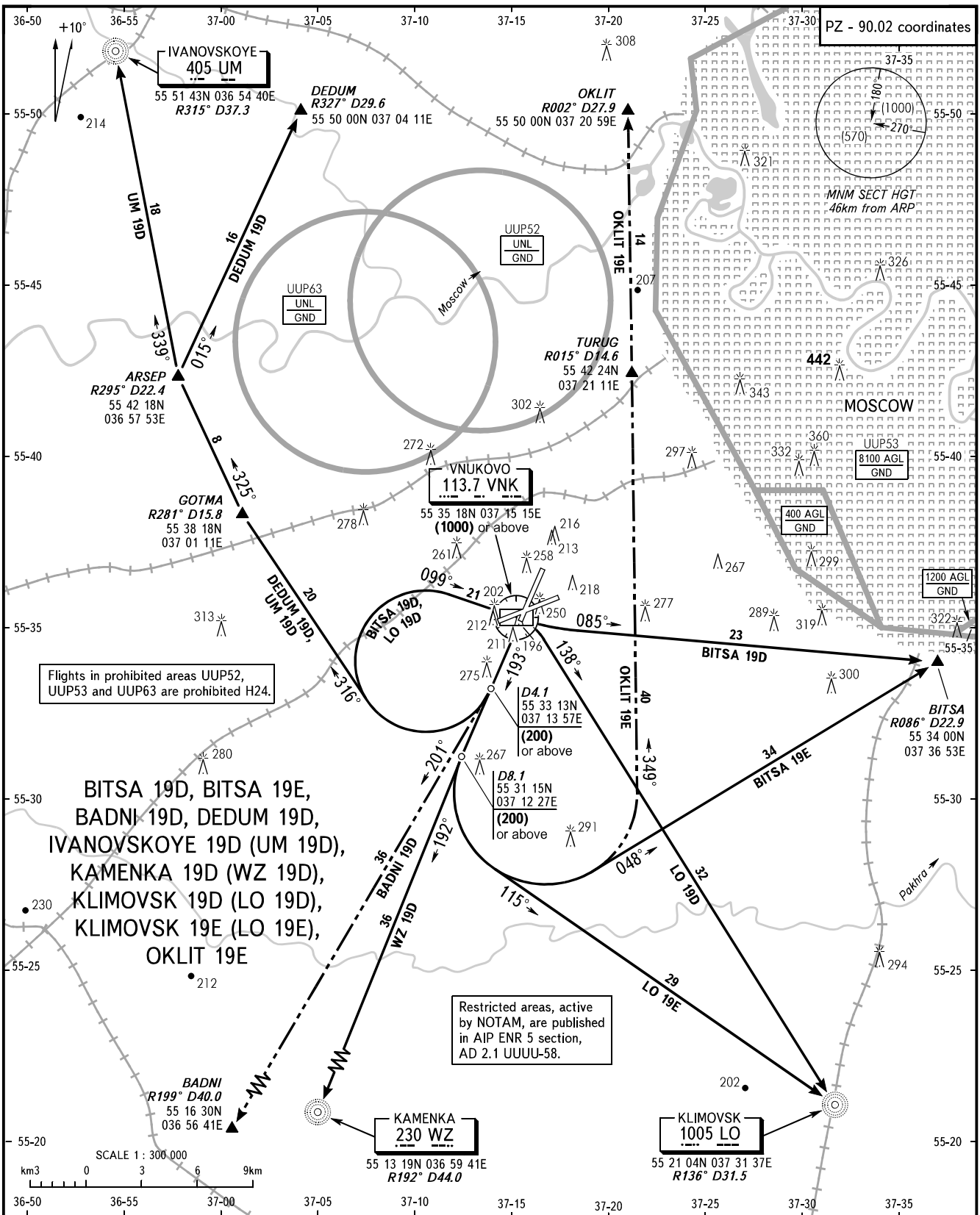
STANDARD DEPARTURE CHART  
INSTRUMENT (SID) - ICAO

TRANSITION  
HEIGHT : (1000)

MOSCOW, RUSSIA

VNUKOVO

RWY 19



Flights in prohibited areas UUP52, UUP53 and UUP63 are prohibited H24.

Restricted areas, active by NOTAM, are published in AIP ENR 5 section, AD 2.1 UUUU-58.

BITSA 19D, BITSA 19E,  
BADNI 19D, DEDUM 19D,  
IVANOVSKOYE 19D (UM 19D),  
KAMENKA 19D (WZ 19D),  
KLIMOVSK 19D (LO 19D),  
KLIMOVSK 19E (LO 19E),  
OKLIT 19E

SCALE 1 : 300 000  
0 3 6 9 km

VNUKOVO TOWER 118.300  
RADAR 126.000  
MOSCOW APPROACH See AD 2.1 UJWW-55

- WARNING:**
- All ACFT shall follow the noise abatement procedures at all times as in accordance with ICAO DOC 8168.
  - After climbing to (200) immediately contact Vnukovo-Radar on 126.000.
  - Initially cleared height of climb after take-off for all SID routes is (600).
  - IAS MAX 460km/h up to FL100.

BEARINGS AND TRACKS ARE MAGNETIC  
ALTITUDES, HEIGHTS AND ELEVATIONS ARE IN METRES  
DISTANCES ARE IN KILOMETRES

CHANGE: HGT