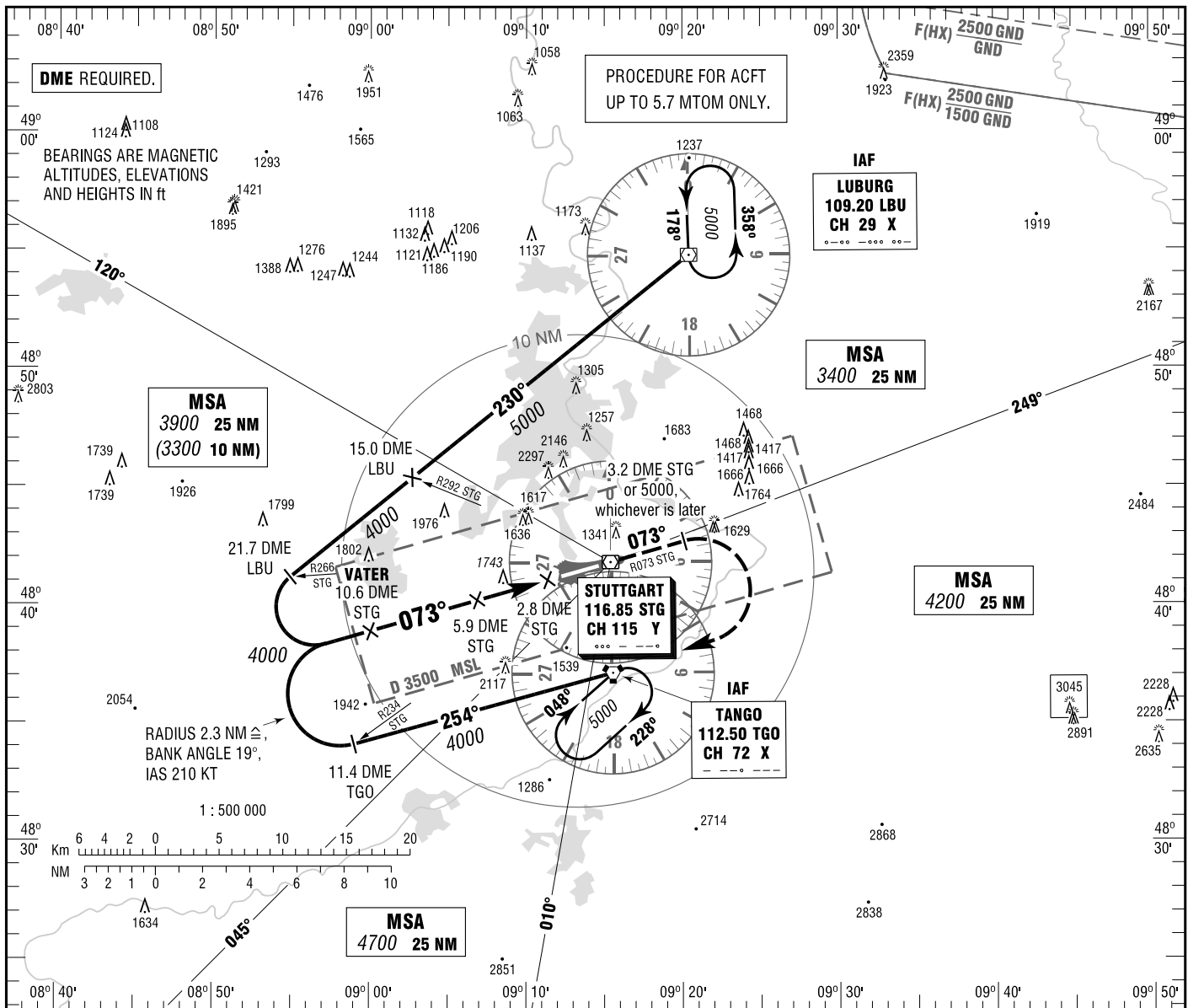


**STUTTGART
VOR
RWY 07**

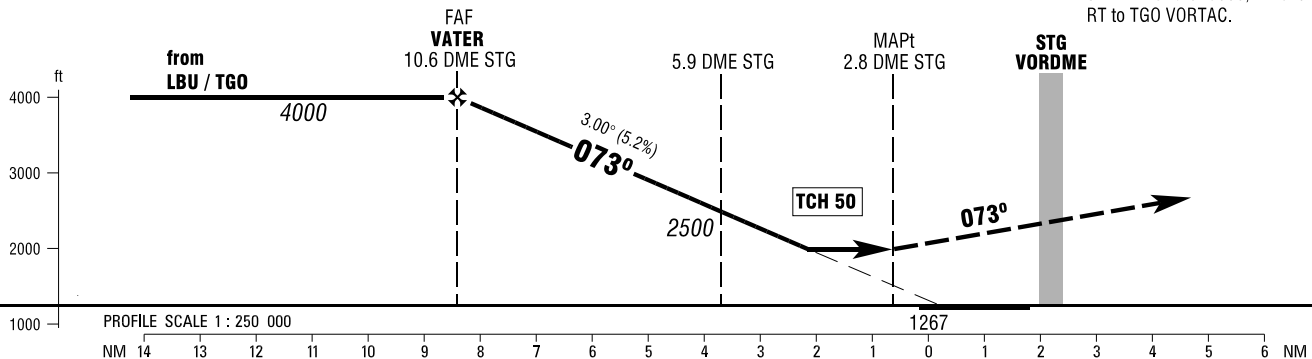
ATIS	126.125	TOWER	118.800
LANGEN RADAR	125.050	GROUND	118.600
DIRECTOR	119.850	APRON	121.700

ELEV 1276
OCH RELATED TO VAR 1° E
THR 07 ELEV 1267

**INSTRUMENT
APPROACH
CHART - ICAO**



MISSED APPROACH PROCEDURE
Climb on R073 STG via STG VORDME to 3.2 DME STG or 5000, whichever is later; RT to TGO VORTAC.



OCA (OCH)	A	B			
VOR/DME *	1990 (730)	1990 (730)			

DME STG	10	9	8	7	6	5
DIST THR	7.8	6.8	5.8	4.8	3.8	2.8
ALTITUDE	3810	3490	3170	2850	2530	2210

Timing not authorized for defining the MAPt.

GS	kt	80	100	120	140
5.9 DME STG - MAPt (3.1 NM)	MIN:SEC	2:20	1:52	1:33	1:20
Rate of descent (5.2%)	ft / MIN	420	530	640	740

* ONLY FOR ACFT UP TO 5.7t MTOM.

Correction: Airspace, OCA(H) values & obstacles.