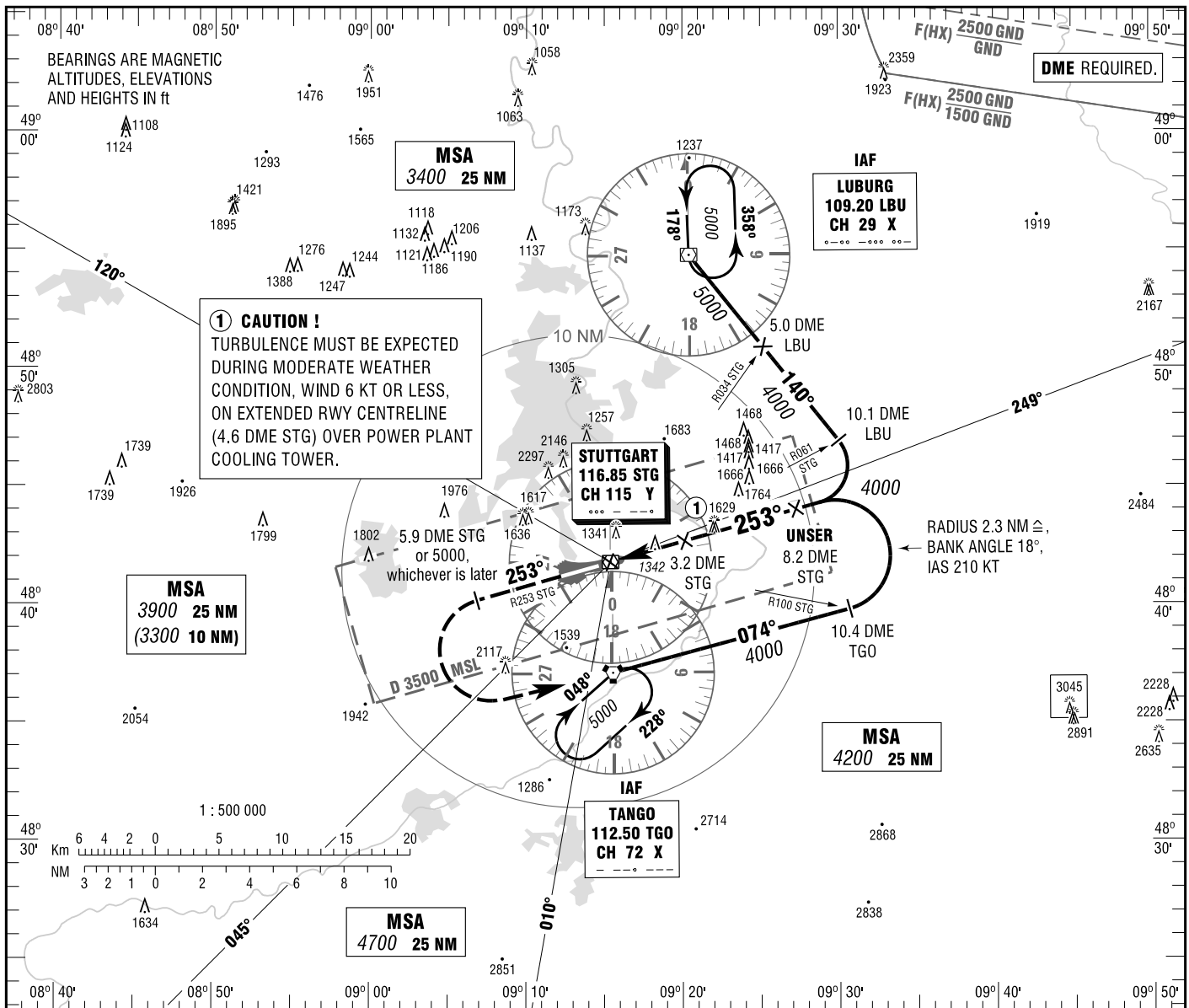


INSTRUMENT  
APPROACH  
CHART - ICAO

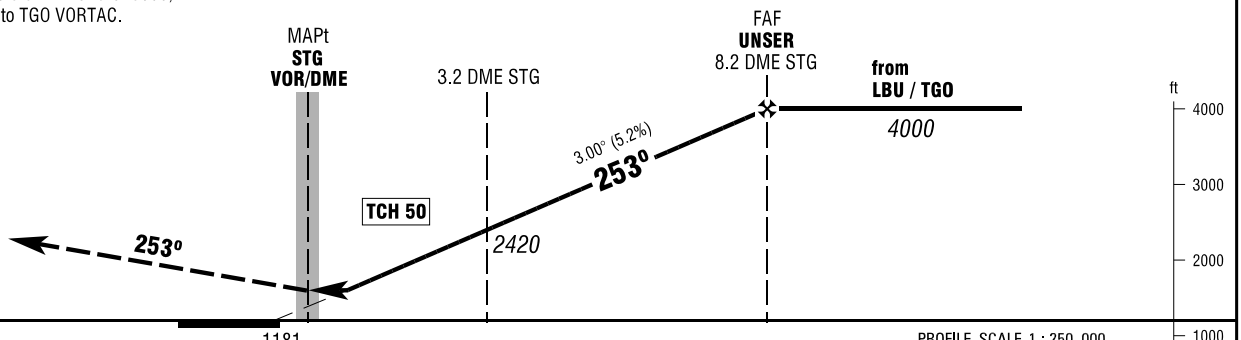
VAR 1° E  
ELEV 1276  
OCH RELATED TO  
THR 25 ELEV 1181

ATIS	126.125	TOWER	118.800
LANGEN RADAR	125.050	GROUND	118.800
DIRECTOR	119.200	APRON	121.700
	119.850		

STUTTART  
VOR  
RWY 25



**MISSED APPROACH PROCEDURE**  
Climb on R253 STG to 5.9 DME STG or 5000, whichever is later; LT to TGO VORTAC.



	NM	6	5	4	3	2	1	0	1	2	3	4	5	6	7	8	9	10	11	12	13	14	NM
OCA (OCH)	A	B	C	D																			
VOR/DME	1590 (410)	1590 (410)	1590 (410)	1590 (410)																			

DME STG	1	2	3	4	5	6	7	8
DIST THR	1.5	2.5	3.5	4.5	5.5	6.5	7.5	8.5
ALTITUDE	1710	2030	2350	2670	2990	3310	3620	3940

Timing not authorized for defining the MAPt.

GS	kt	80	100	120	140	160	180
3.2 DME STG - MAPt (3.2 NM)	MIN:SEC	2:24	1:55	1:36	1:22	1:12	1:04
Rate of descent (5.2%)	ft / MIN	420	530	640	740	850	960

Correction: Airspace.