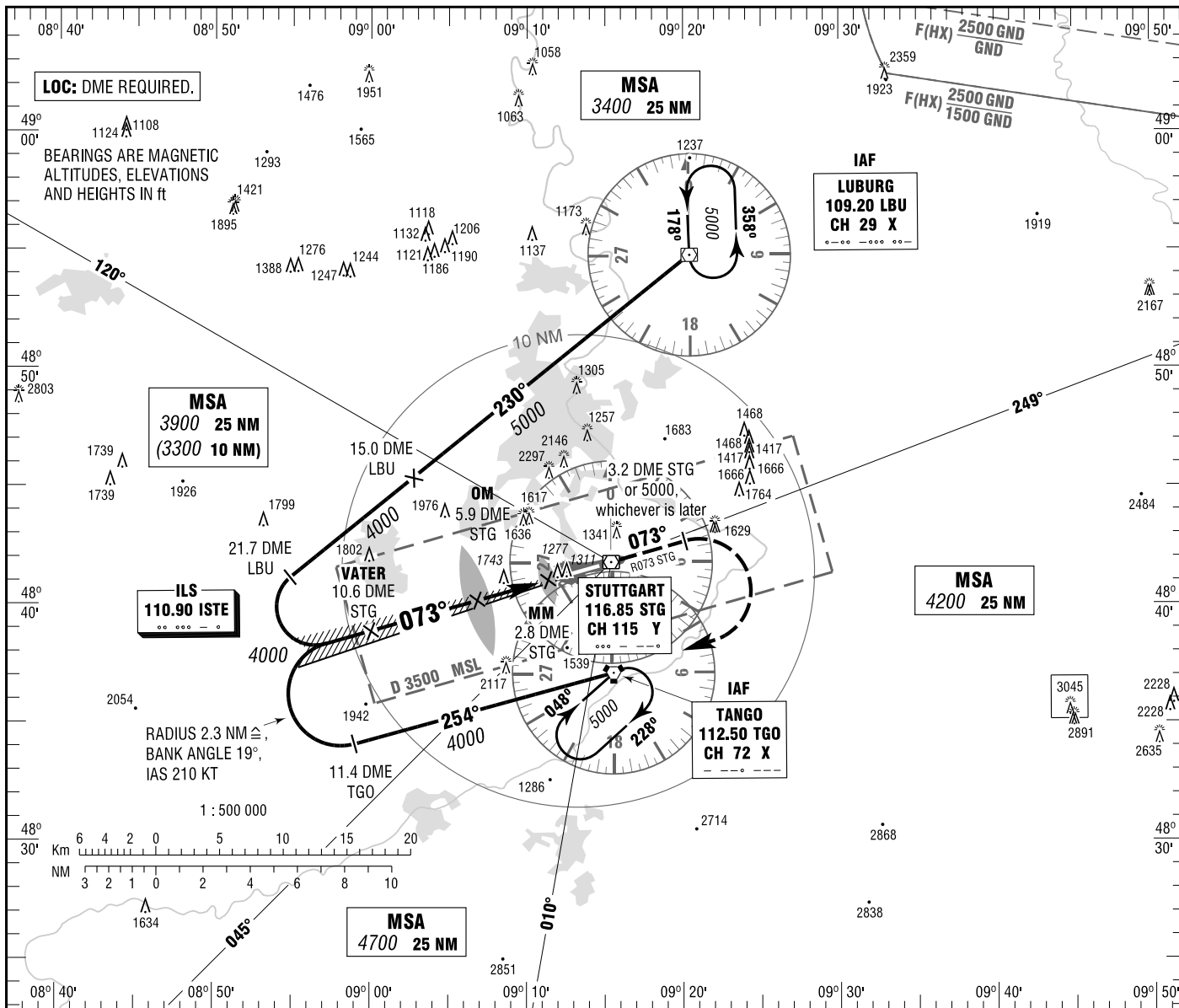


STUTTGART
ILS CAT II & III or LOC
RWY 07

ATIS	126.125	TOWER	118.800
LANGEN RADAR	125.050	GROUND	118.600
DIRECTOR	119.200	APRON	121.700
	119.850		

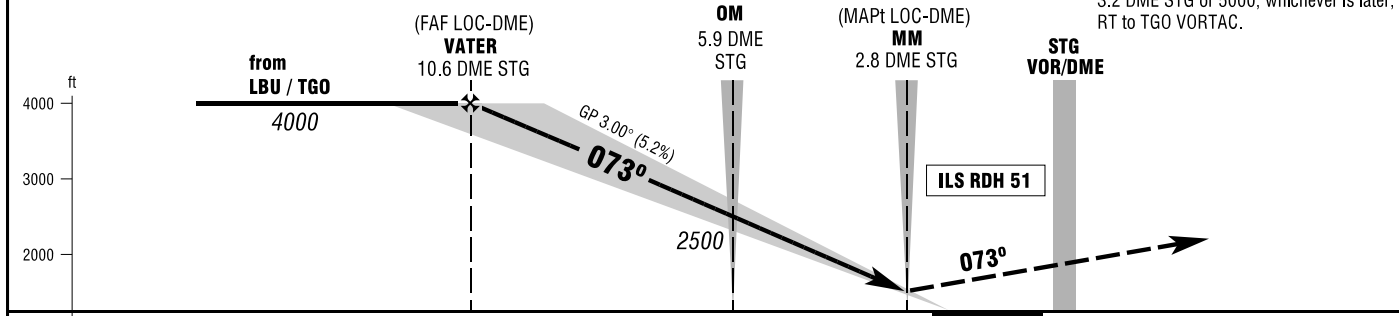
ELEV 1276
OCH RELATED TO VAR 1° E
THR 07 ELEV 1267

**INSTRUMENT
APPROACH
CHART - ICAO**



MISSED APPROACH PROCEDURE

Climb on R073 STG via STG VORDME to 3.2 DME STG or 5000, whichever is later; RT to TGO VORTAC.



OCA (OCH)	A	B	C	D	D _L
ILS CAT I	1417 (150)	1426 (159)	1437 (170)	1449 (182)	1453 (186)
ILS CAT II	1325 (58)	1336 (69)	1350 (83)	1364 (97)	1366 (99)
LOC-DME *	1990 (730)	1990 (730)			

* ONLY FOR ACFT UP TO 5.7 TO MTOM.
CAT IIIA AND CAT IIIB (MNM RVR 75m) APPROVED.

DME STG	10	9	8	7	6	5
DIST THR	7.8	6.8	5.8	4.8	3.8	2.8
ALTITUDE	3810	3490	3170	2850	2530	2210

LOC-DME: Timing not authorized for defining the MAPt.

GS	kt	80	100	120	140	160	180
OM-THR (3.7 NM)	MIN:SEC	2:47	2:13	1:51	1:35	1:23	1:14
Rate of descent (5.2%)	ft / MIN	420	530	640	740	850	960

Correction: Airspace, OCA(H) values & obstacles.