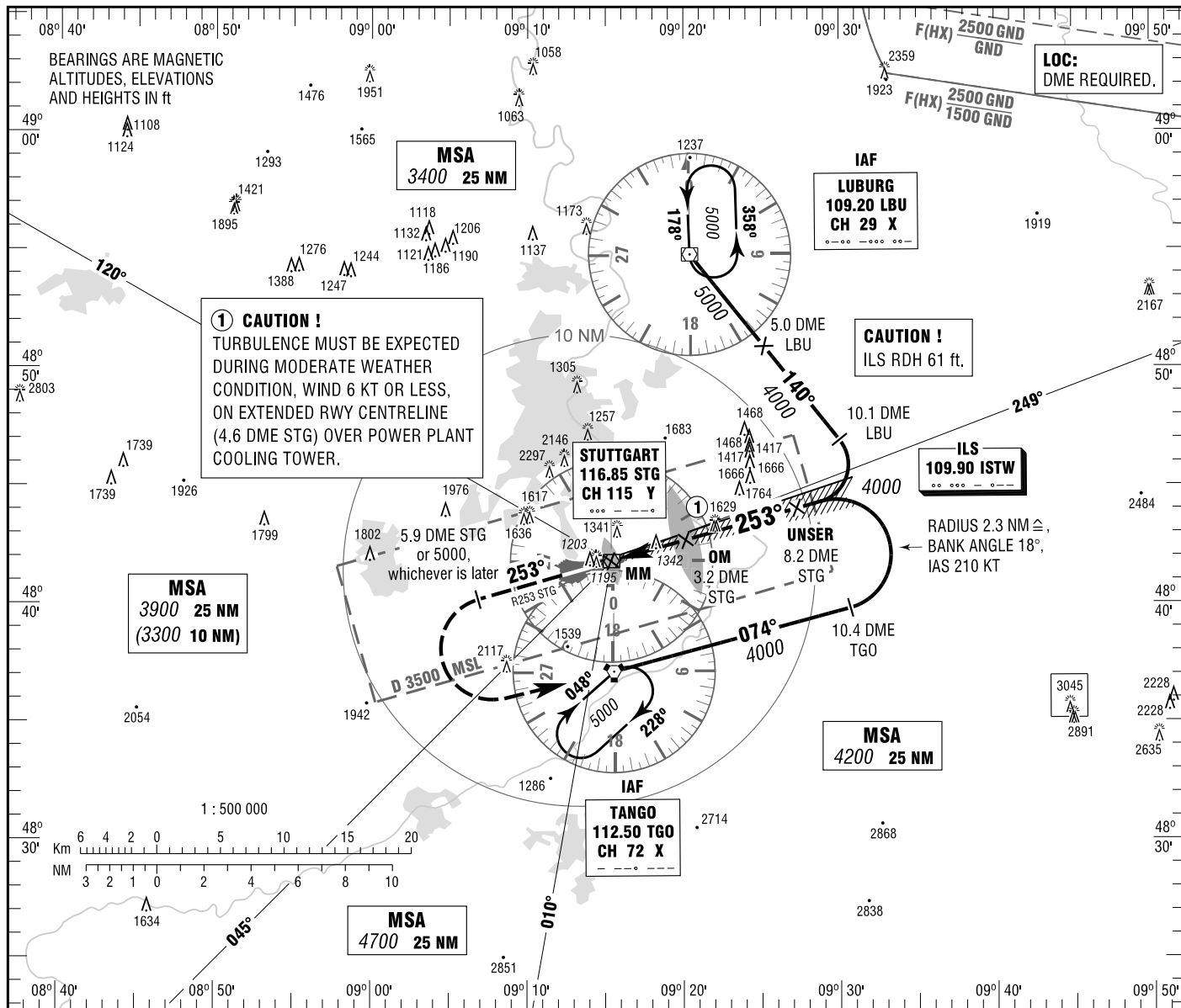


**INSTRUMENT  
APPROACH  
CHART - ICAO**

VAR 1° E  
ELEV 1276  
OCH RELATED TO  
THR 25 ELEV 1181

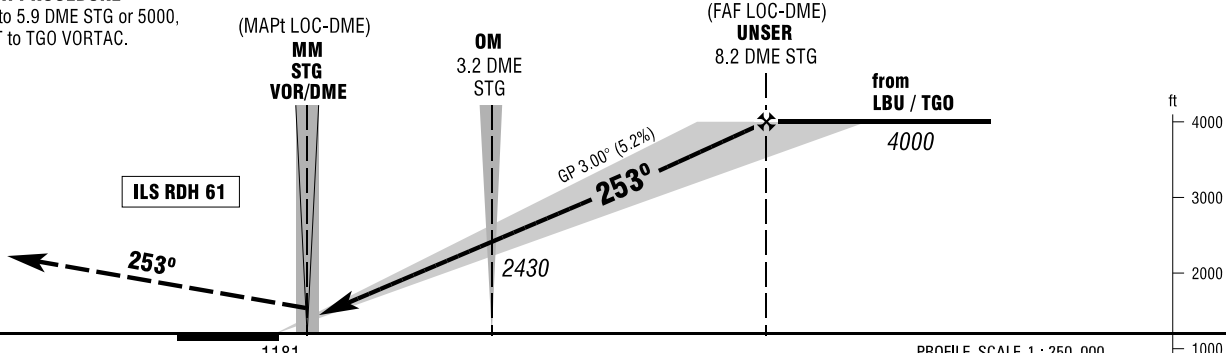
ATIS	126.125	TOWER	118.800
LANGEN RADAR	125.050	GROUND	118.800
DIRECTOR	119.200	APRON	121.700
	119.850		

**STUTTART  
NON-STANDARD ILS  
CAT II & III or LOC RWY 25**



**MISSED APPROACH PROCEDURE**

Climb on R253 STG to 5.9 DME STG or 5000, whichever is later; LT to TGO VORTAC.



OCA (OCH)	A	B	C	D	D <sub>L</sub>
ILS CAT I	1334 (153)	1344 (163)	1354 (173)	1364 (183)	
ILS CAT II	1238 (57)	1254 (73)	1267 (86)	1280 (99)	
LOC-DME	1590 (410)	1590 (410)	1590 (410)	1590 (410)	

DME STG	1	2	3	4	5	6	7	8
DIST THR	1.5	2.5	3.5	4.5	5.5	6.5	7.5	8.5
ALTITUDE	1720	2040	2360	2680	3000	3320	3630	3950

**LOC-DME:** Timing not authorized for defining the MAPt.

GS	kt	80	100	120	140	160	180
OM - THR (3.8 NM)	MIN:SEC	2:51	2:17	1:54	1:38	1:26	1:16
Rate of descent (5.2%)	ft / MIN	420	530	640	740	850	960

CAT IIIA AND CAT IIIB (MNM RVR 75m) APPROVED.

Correction: Airspace.