

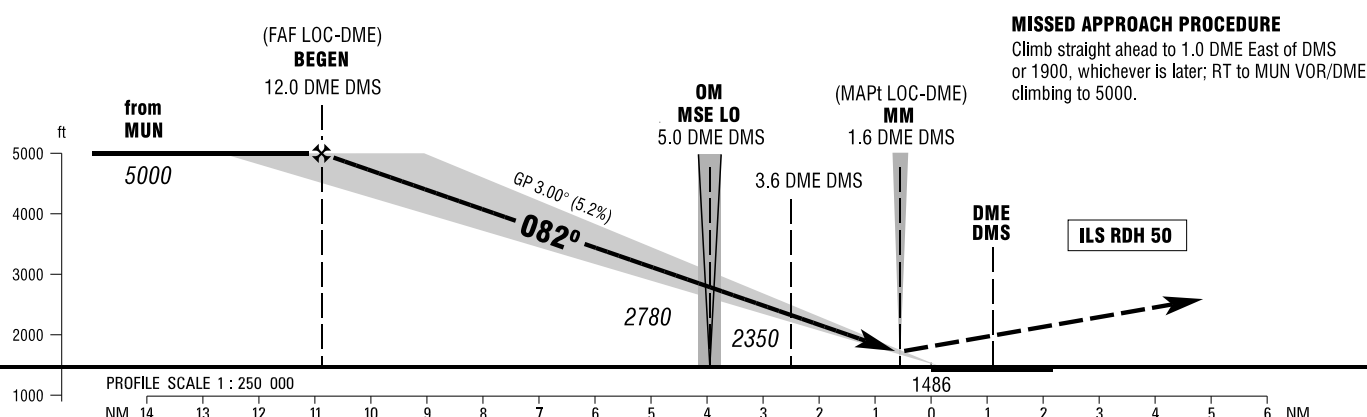
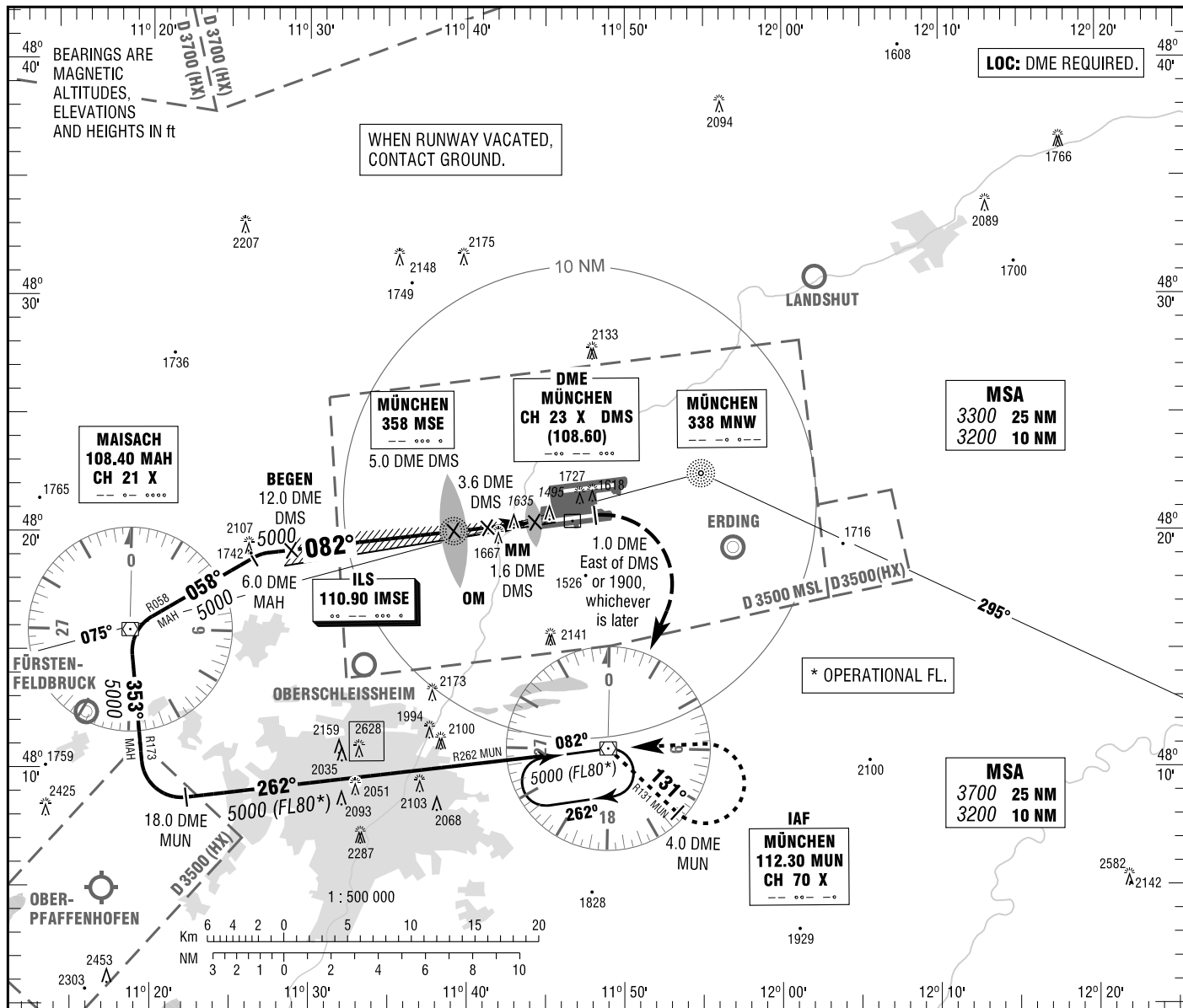
INSTRUMENT  
APPROACH  
CHART - ICAO

VAR 2° E  
ELEV 1487  
OCH RELATED TO  
THR 08R ELEV 1486

ATIS 123.125  
RADAR 127.950  
DIRECTOR 118.825  
TOWER 120.500

GROUND 121.825  
APRON (W) 121.775  
APRON (E) 121.700

MÜNCHEN  
ILS CAT II & III or LOC  
RWY 08R



**MISSED APPROACH PROCEDURE**  
Climb straight ahead to 1.0 DME East of DMS or 1900, whichever is later; RT to MUN VOR/DME climbing to 5000.

OCA (OCH)	A	B	C	D	D <sub>i</sub>
ILS CAT I	1626 (140)	1636 (150)	1646 (160)	1656 (170)	
ILS CAT II	1538 (52)	1554 (68)	1567 (81)	1580 (94)	
LOC-DME	1890 (400)	1890 (400)	1890 (400)	1890 (400)	

	11	10	9	8	7	6	5	4	3
DME DMS									
DIST THR	9.9	8.9	7.9	6.9	5.9	4.9	3.9	2.9	1.9
ALTITUDE	4690	4370	4060	3740	3420	3100	2780	2460	2150

**LOC-DME:** Timing not authorized for defining the MAPt.

GS	kt	80	100	120	140	160	180
OM - THR (4.0 NM)	MIN:SEC	3:00	2:24	2:00	1:43	1:30	1:20
Rate of descent (5.2%)	ft / MIN	420	530	640	740	850	960

CAT IIIA AND CAT IIIB (MNM RVR 75M) APPROVED.

Correction: Obstacles, OCA(H) obstacles & values, procedure.