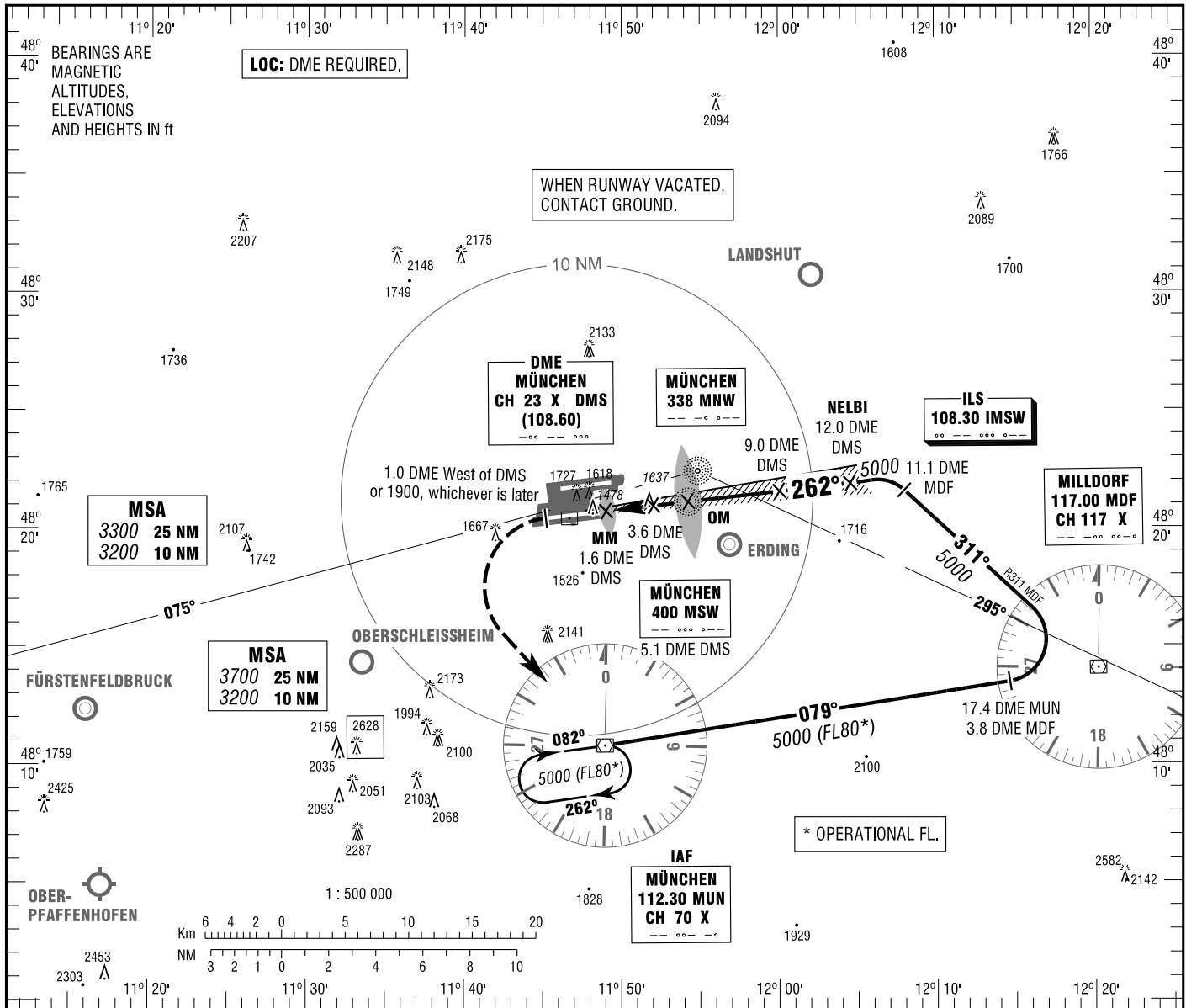


MÜNCHEN
ILS CAT II & III or LOC
RWY 26L

ATIS	123.125	GROUND	121.825
RADAR	127.950	APRON (W)	121.775
DIRECTOR	118.825	APRON (E)	121.700
TOWER	120.500		

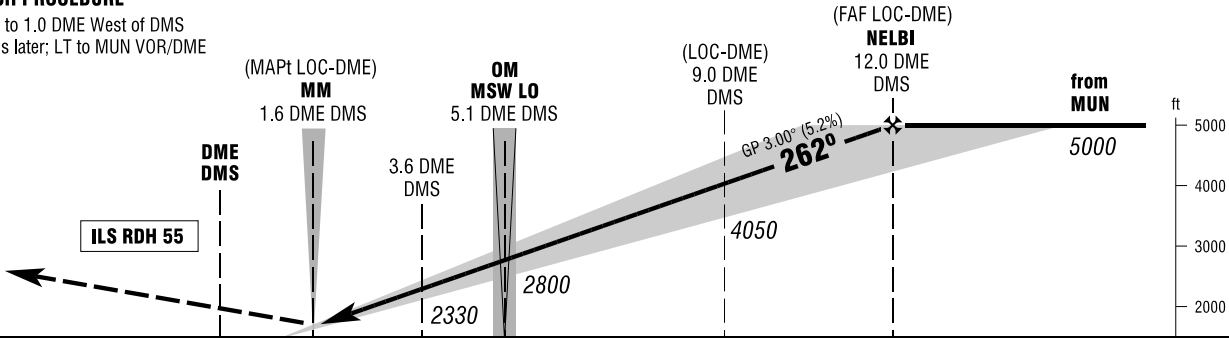
ELEV 1487
OCH RELATED TO VAR 2° E
THR 26L ELEV 1470

INSTRUMENT
APPROACH
CHART - ICAO



MISSED APPROACH PROCEDURE

Climb straight ahead to 1.0 DME West of DMS or 1900, whichever is later; LT to MUN VOR/DME climbing to 5000.



OCA (OCH)	A	B	C	D	D _t
ILS CAT I	1609 (139)	1619 (149)	1629 (159)	1639 (169)	
ILS CAT II	1521 (51)	1537 (67)	1550 (80)	1563 (93)	
LOC-DME	1890 (420)	1890 (420)	1890 (420)	1890 (420)	

DME DMS	3	4	5	6	7	8	9	10	11
DIST THR	1.9	2.9	3.9	4.9	5.9	6.9	7.9	8.9	9.9
ALTITUDE	2130	2450	2770	3090	3410	3730	4050	4360	4680

LOC-DME: Timing not authorized for defining the MAPt.

GS	kt	80	100	120	140	160	180
OM - THR (4.0 NM)	MIN:SEC	3:00	2:24	2:00	1:43	1:30	1:20
Rate of descent (5.2%)	ft / MIN	420	530	640	740	850	960

CAT IIIA AND CAT IIIB (MNM RVR 75M) APPROVED.

Correction: Obstacles, OCA(H) obstacles & values, procedure.