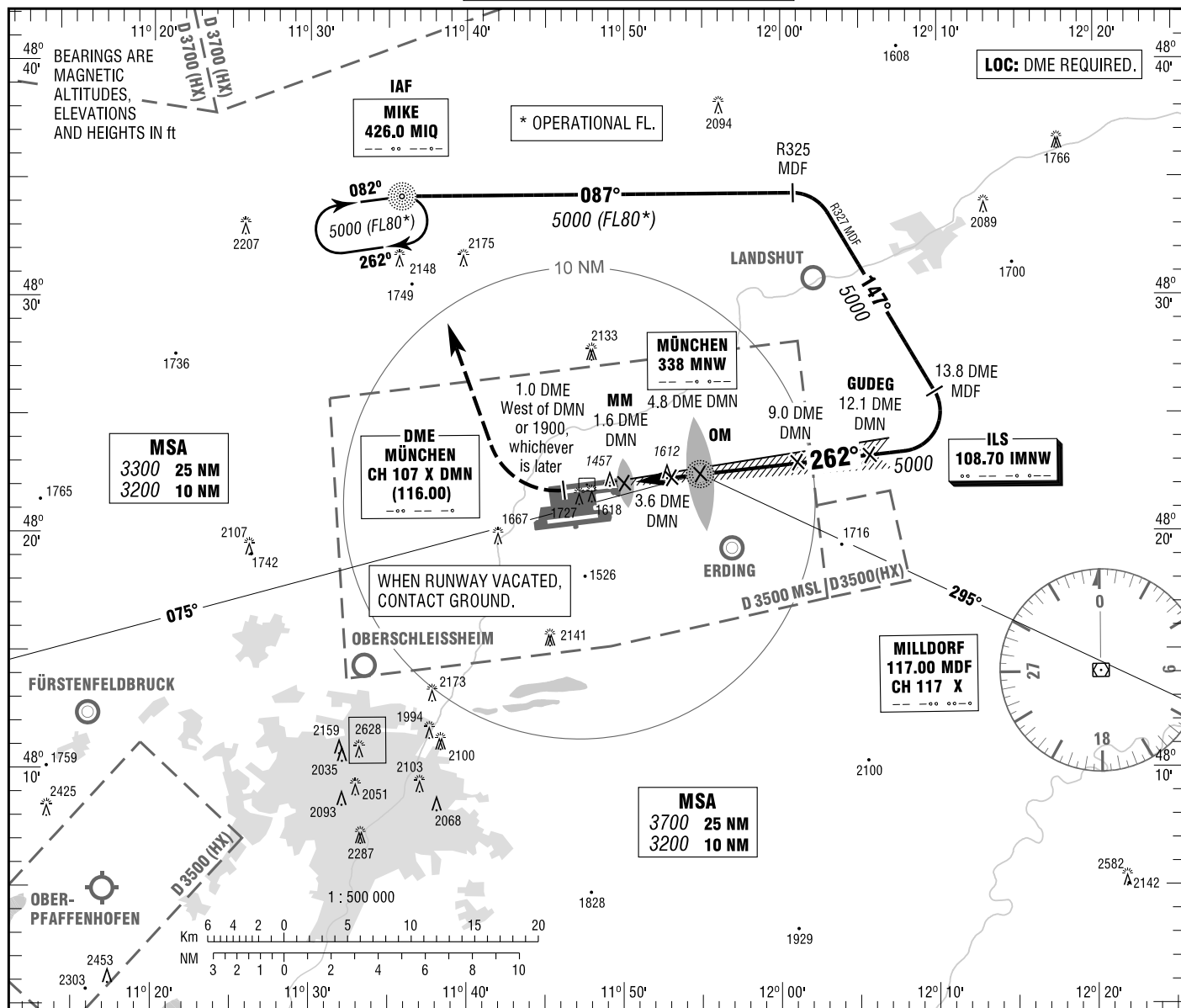


INSTRUMENT
APPROACH
CHART - ICAO

VAR 2° E
ELEV 1487
OCH RELATED TO
THR 26R ELEV 1449

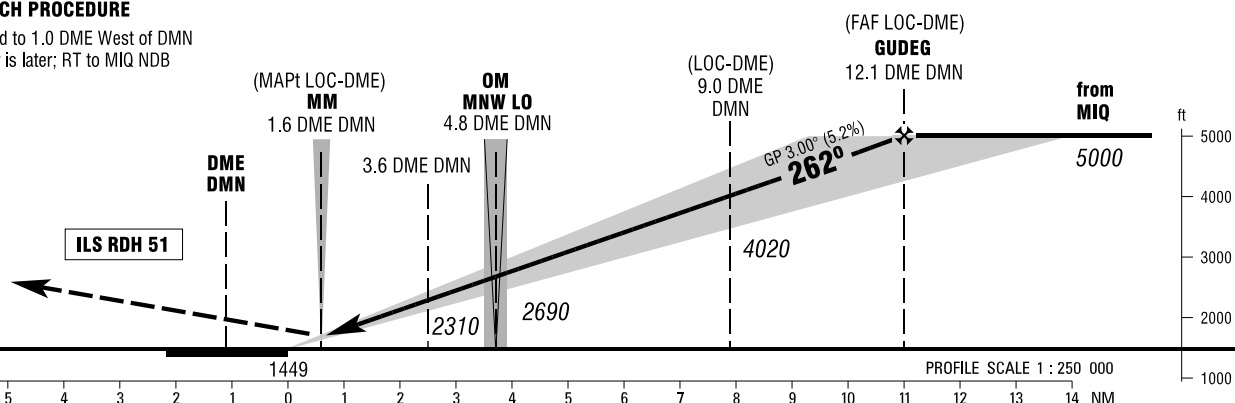
ATIS	123.125	GROUND	121.975
RADAR	123.900	APRON (W)	121.775
DIRECTOR	118.825	APRON (E)	121.700
TOWER	118.700		

MÜNCHEN
ILS CAT II & III or LOC
RWY 26R



MISSED APPROACH PROCEDURE

Climb straight ahead to 1.0 DME West of DMN or 1900, whichever is later; RT to MIQ NDB climbing to 5000.



OCA (OCH)	A	B	C	D	D _i
ILS CAT I	1589 (140)	1598 (149)	1608 (159)	1618 (169)	
ILS CAT II	1500 (51)	1516 (67)	1530 (81)	1543 (94)	
LOC-DME	1860 (410)	1860 (410)	1860 (410)	1860 (410)	

DME DMN	3	4	5	6	7	8	9	10	11	12
DIST THR	1.9	2.9	3.9	4.9	5.9	6.9	7.9	8.9	9.9	10.9
ALTITUDE	2110	2430	2750	3070	3380	3700	4020	4340	4660	4980

LOC-DME: Timing not authorized for defining the MAPt.

GS	kt	80	100	120	140	160	180
OM - THR (3.7 NM)	MIN:SEC	2:47	2:13	1:51	1:35	1:23	1:14
Rate of descent (5.2%)	ft / MIN	420	530	640	740	850	960

CAT IIIA AND CAT IIIB (MNM RVR 75M) APPROVED.

Correction: Obstacles, OCA(H) obstacles & values, procedure.