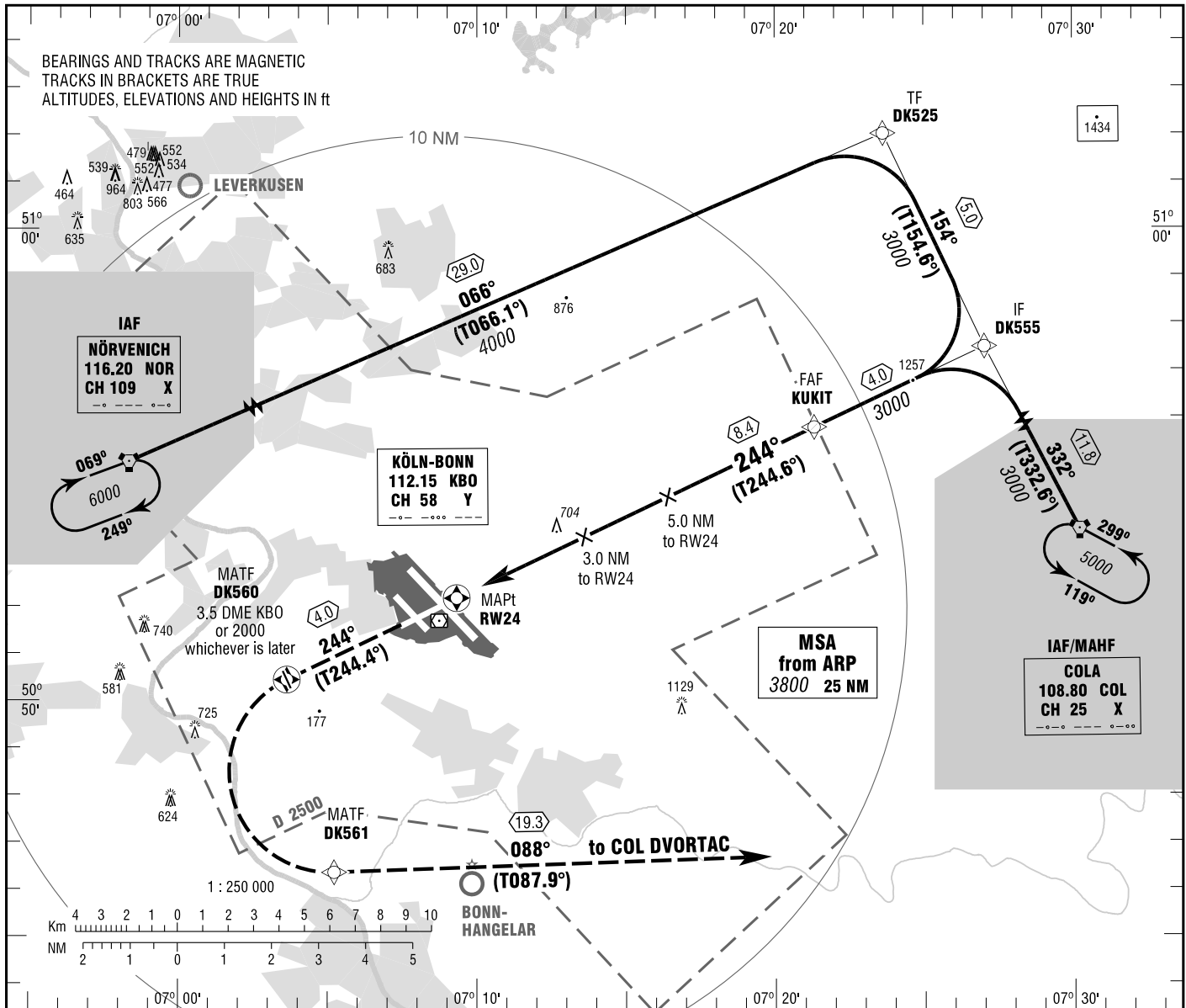


KÖLN/BONN
RNAV (GPS)
RWY 24

ATIS	112.150 (KBO)	GROUND	121.725
DIRECTOR	124.200	MIL (GND)	136.250
TOWER	121.050		254.650

ELEV 302
OCH RELATED TO VAR 0°
THR 24 ELEV 272

INSTRUMENT
APPROACH
CHART - ICAO



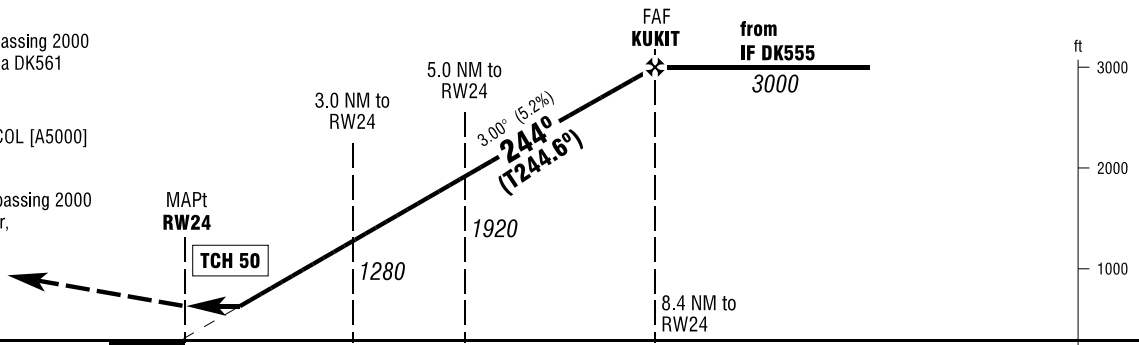
MISSED APPROACH PROCEDURE
RNAV (GPS)

Climb on track 244° 5000, when passing 2000 or DK560, whichever is later, LT via DK561 on track 088° to COL.

DK560 - [A2000+; L] - DK561 - COL [A5000]

NON-RNAV

Climb straight ahead 5000, when passing 2000 or 3.5 DME KBO, whichever is later, LT to COL DVORTAC.



OCA (OCH)	A	B	C	D
GPS	950 (680)	950 (680)	950 (680)	950 (680)

DIST THR / RW24	2	3	4	5	6	7	8
ALTITUDE	960	1280	1600	1920	2240	2560	2870

Timing not authorized for defining the MAPt.

GS	kt	80	100	120	140	160	180
KUKIT - RW24 (8.4 NM)	MIN:SEC	6:18	5:02	4:12	3:36	3:09	2:48
Rate of descent (5.2%)	ft / MIN	420	530	640	740	850	960

Correction: Communications.